

S6301-56ST

L2/L3 OOB Management Switch

Enterprises network comprises of many connected devices such as laptops, computers, and access point to meet the employee's demand at work. The S6301-56ST L2/L3 OOB management switch is a high quality and low-cost switch that provides enterprise and small businesses versatile scalability and simple management. With a small form factor and high-density configurations, the S6301-56ST L2/L3 OOB management switch is a white box switch that can be positioned in enterprises due to its versatile connectivity and in data center as a management switch to manage all the OOB ports in the rack.



KEY BENEFITS

- A broad range of Layer 2 and Layer 3 intelligent-enterprise switching solutions
- Top connectivity for small, medium sized or branch-level offices.
- Simple L2/L3 management switch for data center switch and servers.
- Advanced quality of service (QoS) and resiliency

KEY FEATURES

- High density 48 x 1G + 8 x 10G service interfaces
- 130Gbps switching capacity
- Intel® Denverton Dual/Quad-Cores
- Broadcom Trident3-X2 Silicon
- 1 RU small form factor with 440mm depth
- Hot swappable power supplies with 1+1 redundancy support
- Hot swappable fan modules with 1+1 redundancy support

SPECIFICATIONS

PHYSICAL

	♦ 8 x 1G/10G SFP+ ports
	♦ 48 x 10M/100M/1G RJ45 port
	♦ 1 x 100/1000M RJ45 management port
	♦ 1 x RJ45 serial console port
	♦ 1 x USB 2.0 Type-A port
Processor	Standard : Intel Denverton 2-Core @ 1.6GHz Premium : Intel Denverton 4-Core @ 1.6GHz
Memory	Standard : 8GB DDR4 Premium : 8GB DDR4 (Up to 16GB)
Storage	32GB SSD
ASIC	Broadcom Trident3-X2 BCM56277
LED	Power and System status LEDs per unit Link and Activity LEDs per port FAN Status LED per FAN PSU Status LED per PSU ID LED per unit
Chassis (WxDxH)	1RU, 440 x 440 x 43.8 mm or 17.32" x 17.32" x 1.72" Weight: 5.62kg or 12.39lbs (Without FRU)
Redundancy	Hot swappable, 1+1 redundant PSU Hot swappable, 1+1 redundant Fans

S6301-56ST

Cloud & Data Center Solutions

ENVIRONMENTAL

Power Specs.	AC input: 100 to 240V, 3A DC input: -36 to -72V, 6A Typical power: 64 Watts (no transceiver)
Max. Operating Specs.	Operating temperature: 0°C to 45°C (32°F to 113°F) Operating humidity: 5% to 95% (RH), non-condensing
Max. Non-Operating Specs.	Storage temperature: -40°C to 70°C (-40°F to 158°F) Storage humidity: 5% to 95% (RH), non-condensing

PERFORMANCE

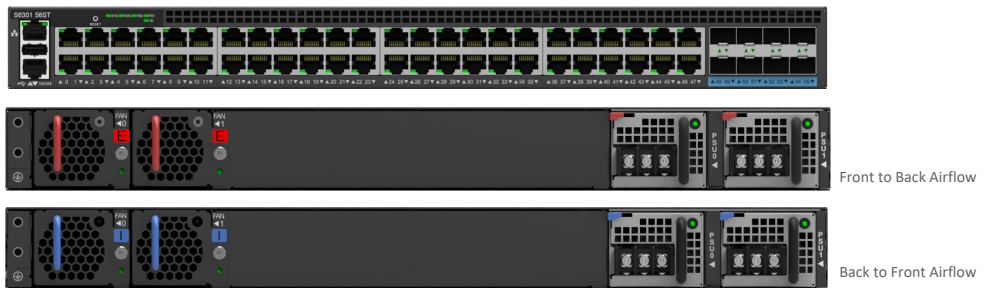
Switching Capacity	130 Gbps
Packet Buffer	4 MB

REGULATORY COMPLIANCE

Safety	UL 62368-1 IEC 62368-1 BSMI	EMC	FCC Part 15, Subpart B, Class A ICES-003, Class A EN 55032, Class A EN 300 386 EN 55035 VCCI CISPR 32, Class A BSMI
Environment	WEEE		

Specifications are subject to change without notice.
Contact our sales team for current configuration options.

S6301-56ST Front and Back Views



ACCESSORIES

Compatible Transceivers Types
10G SFP+ SR, 10G SFP+ LR, 10G SFP+ ER, 10G SFP+ ZR

Available to Order
Power Supply Types
PSU-151-DESR, 150W DC, exhaust air flow
PSU-151-DISB, 150W DC, intake air flow
PSU-151-AESR, 150W AC, exhaust air flow
PSU-151-AISB, 150W AC, intake air flow

Fan Types
FAN-402825-HDN, exhaust air flow
FAN-402825-CDN, intake air flow

